



慈溪网通电子有限公司

CiXi WangTong Electronic Co.,Ltd

# 产品规格书

Product Specification

产品名称: PW21型连接器

拟制:

审核:

批准:

ADD:浙江省慈溪市匡堰东工业区

TEL:0574-23618678

FAX:0574-63535838

WEB:[www.dipswitches.cn](http://www.dipswitches.cn)



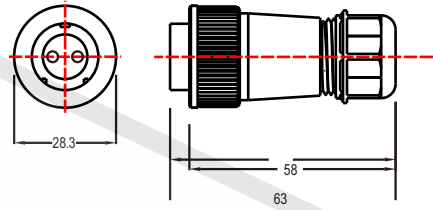


PW2101N

PW2101H

电缆插头  
Cable plug

与PW2102, PW2103, PW2104 相配  
Match with PW2102, PW2103, PW2104

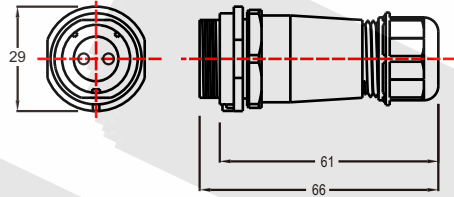


PW2102N

PW2102H

对接插座  
Docking socket

与PW2101 相配  
Match with PW2101

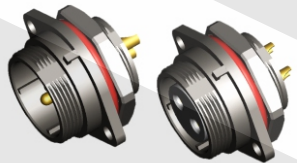
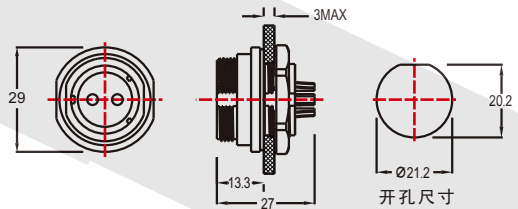


PW2103N

PW2103H

后螺母插座  
Rear mount

与PW2101 相配  
Match with PW2101

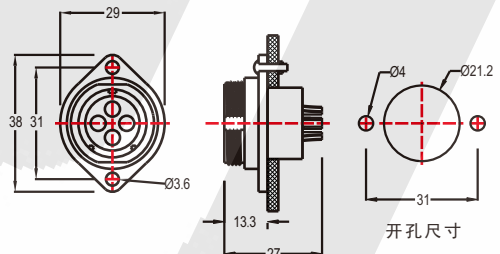


PW2104N

PW2104H

2孔法兰插座  
2-Hole flange

与PW2101 相配  
Match with PW2101



芯数排列及技术特性表  
Contact arrangement and spec

芯数 Number of contact	2	3	4	5	7	9	12
插针绝缘体正面图 Malc contact face view							
额定电流A Rated current (A)	30A	30A	30A	30A	15A	5A	5A
接触件直径 Contact diameter	03X2	03X3	03X4	03X5	02X7	01X9	01X12
工作电压 (AC, V) Rated voltage (AC, V)	500V	500V	500V	500V	500V	500V	400V
耐压 (AC, V) 1min Test voltag (AC, V) 1min	1500V	1500V	1500V	1500V	1500V	1500V	1200V
接触电阻 mΩ Contact resistance mΩ	1	1	1	1	2.5	5	5
线规mm2/AWG Wire size mm2/AWG	≤4.17/11	≤4.17/11	≤4.17/11	≤4.17/11	≤2/14	≤0.785/18	≤0.785/18